

Experience with global mandatory loss limits

Bjørn Helge Hoffmann
2019



1

Do mandatory loss limits prevent problem gambling?

2

What is the effect for the company?

AGENDA

1 ABOUT &
WHY

2 FACTS &
NUMBERS

3 DOES IT
WORK?

AGENDA

1 ABOUT &
WHY

2 FACTS &
NUMBERS

3 DOES IT
WORK?



Norsk Tipping AS

The Norwegian State Lottery

2

millions players

Prevent
problem
gambling

65%

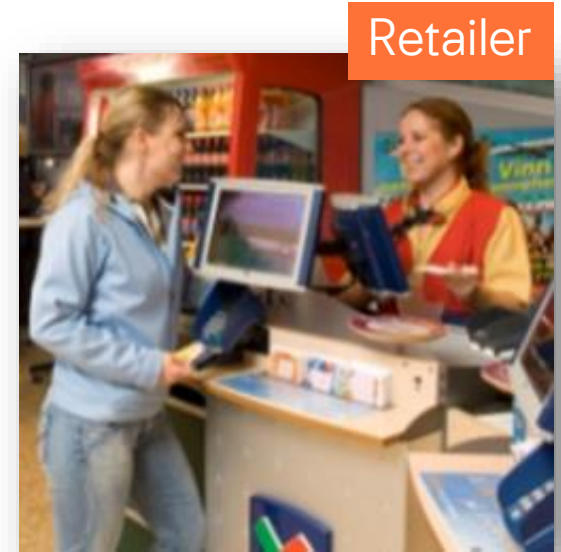
of the market

Mandatory registered/identified play



60%

40%



Games:

Lottery

Sports

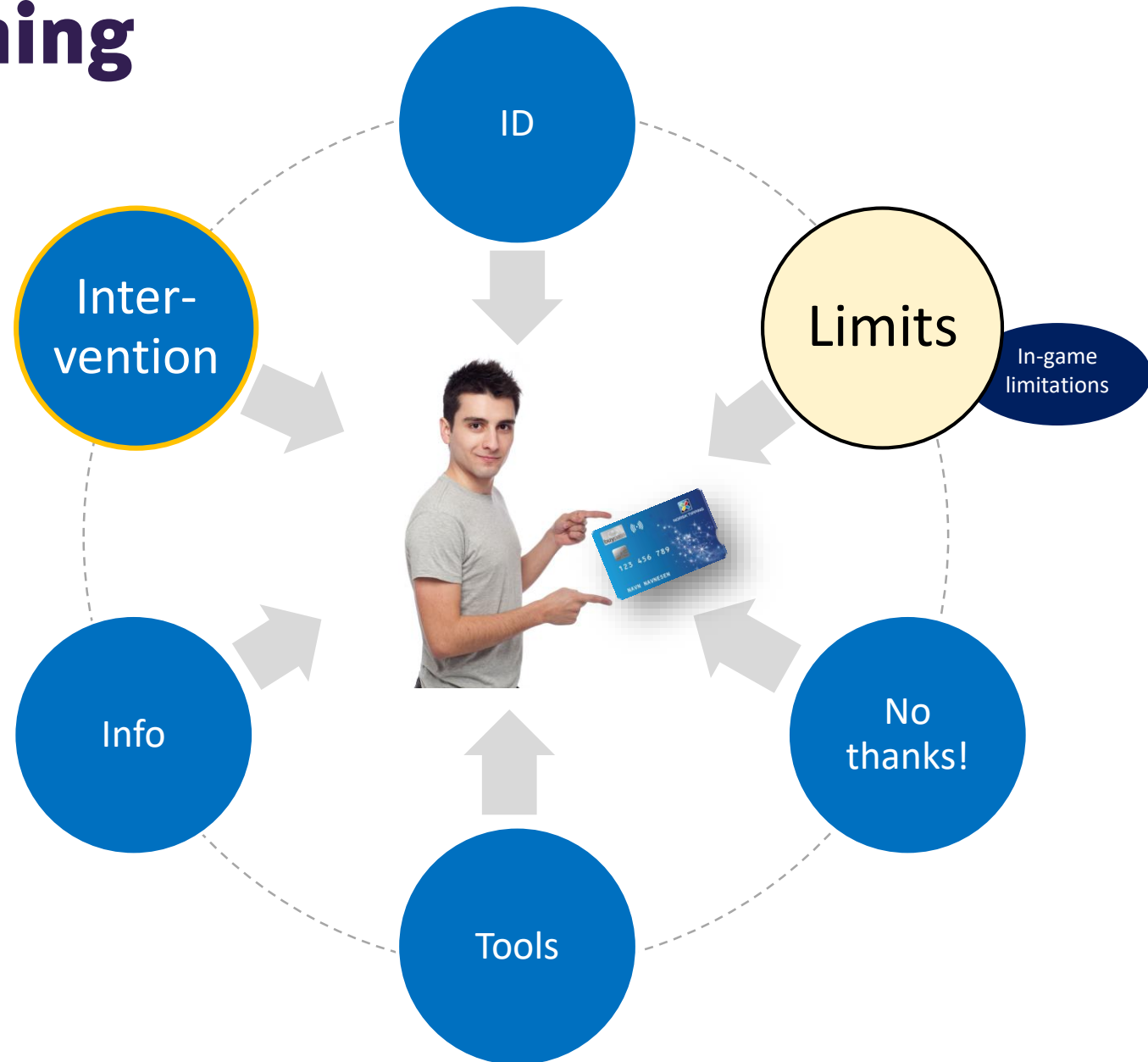
Casino
(Internet)

VLT/EGM

Scratch
cards



Responsible Gaming Framework



Jonsson, J., Hodgins, D. C., Munck, I., & Carlbring, P. (2019). Reaching out to big losers: A randomized controlled trial of brief motivational contact providing gambling expenditure feedback. *Psychology of Addictive Behaviors, 33*(3), 179-189 <https://psycnet.apa.org/fulltext/2019-11517-001.html>

Why mandatory loss limits?

- **Prevention**

- Mandatory to set loss limit before playing
(Pre-commitment)

- **Minimum protection**

- Max amount on limits
NOK 20 000 (€ 2 000 pr month)
(Harm minimization)



Introduction

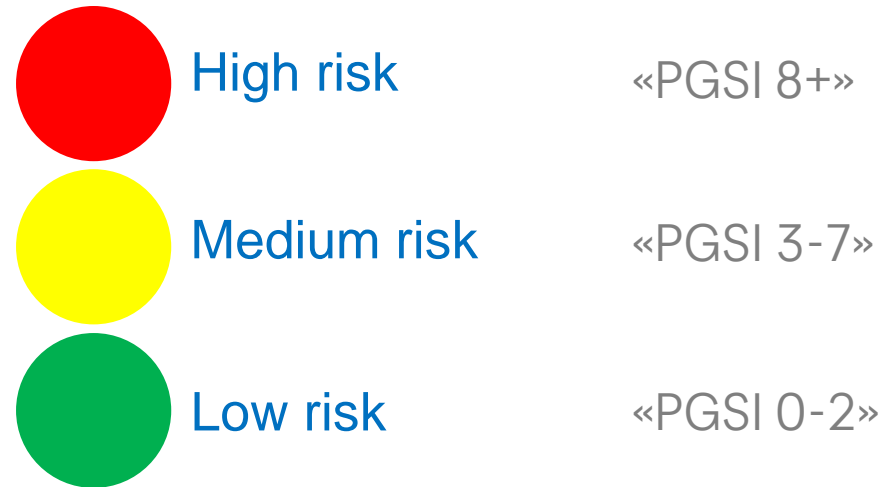
Mandatory loss limits

- 2008: VLT (Max NOK 4 400 (€ 440))
- 2014: Internet casino (Max NOK 10 000 (€ 1 000))
- **2016: Mandatory global loss limit, all games**
(for all identified play) (Max NOK 20 000 (€ 2 000))



Player data analysis

- Playscan
 - Analyse the behaviour of all players and categorize them in risk levels



AGENDA

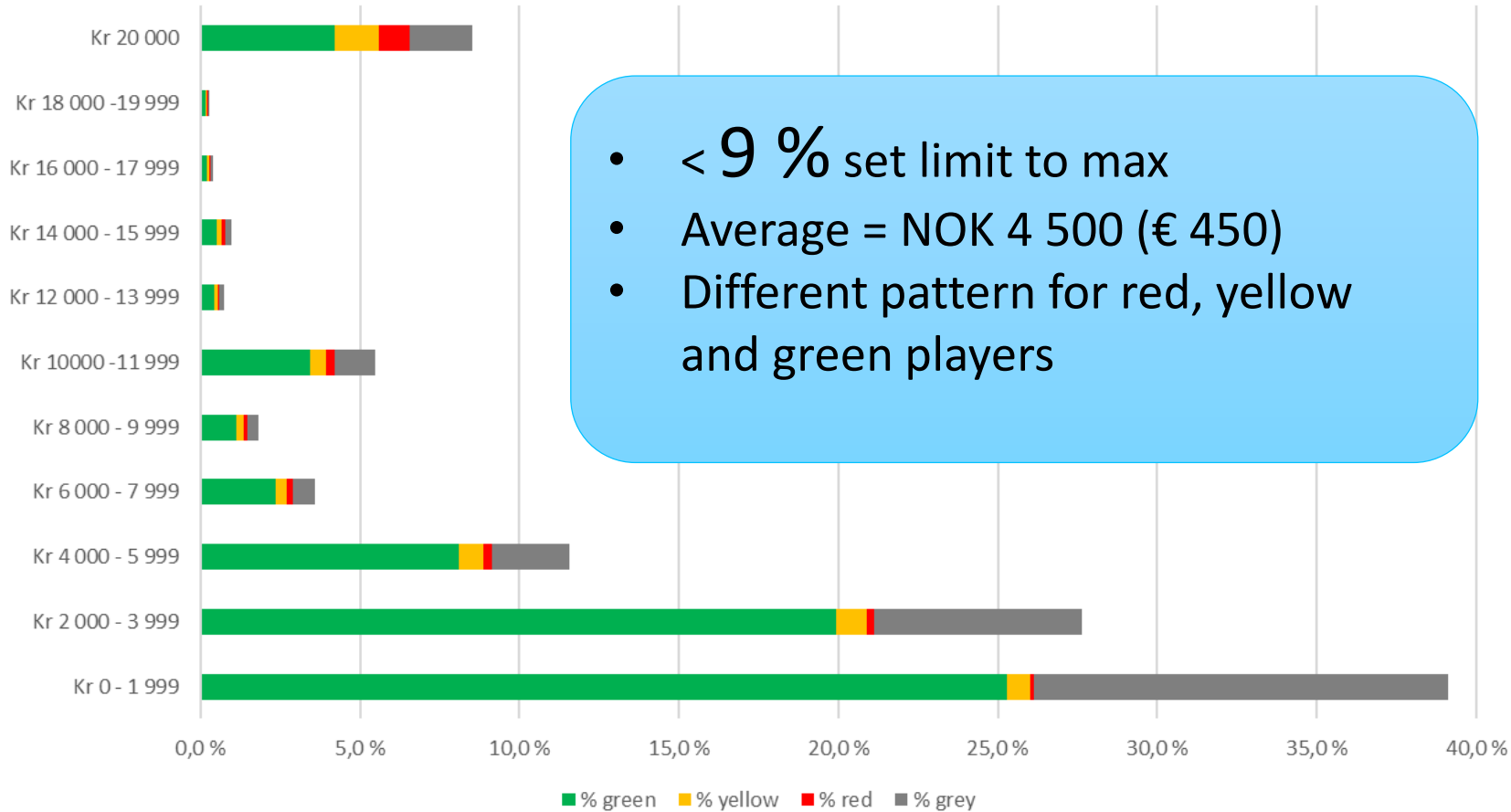
1 ABOUT &
WHY

2 FACTS &
NUMBERS

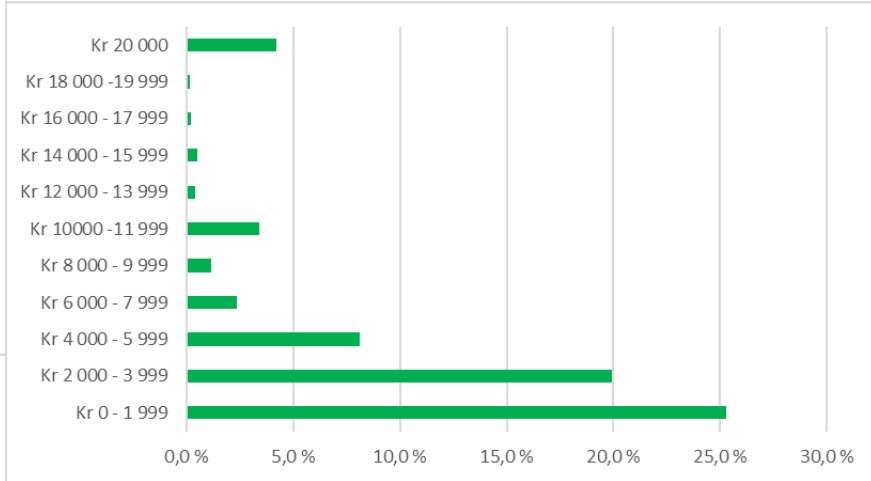
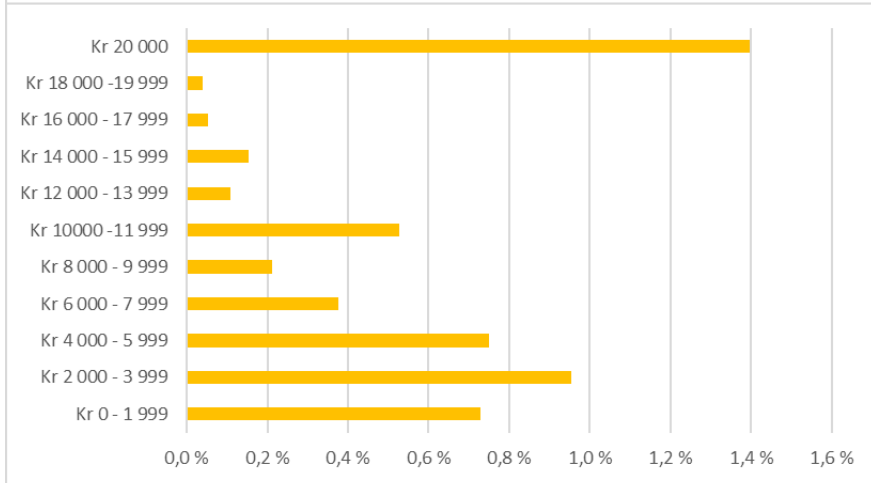
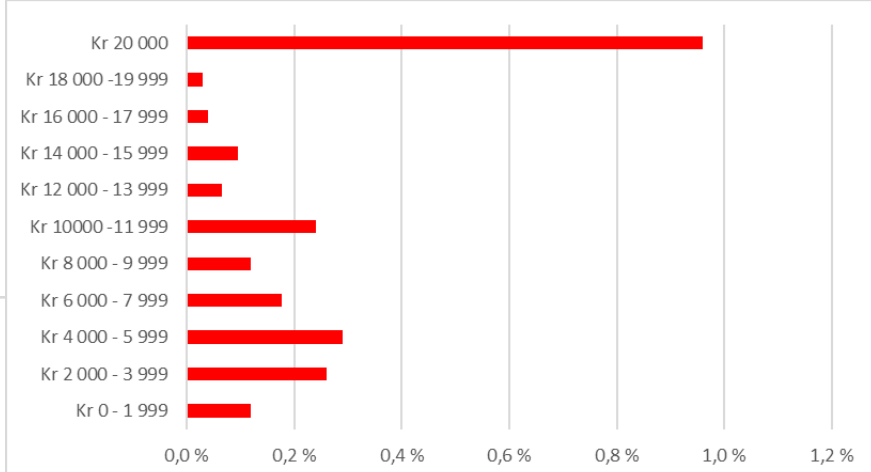
3 DOES IT
WORK?

Limit distribution

Distribution Global Loss Limit (month) (790 000 players April 2019)

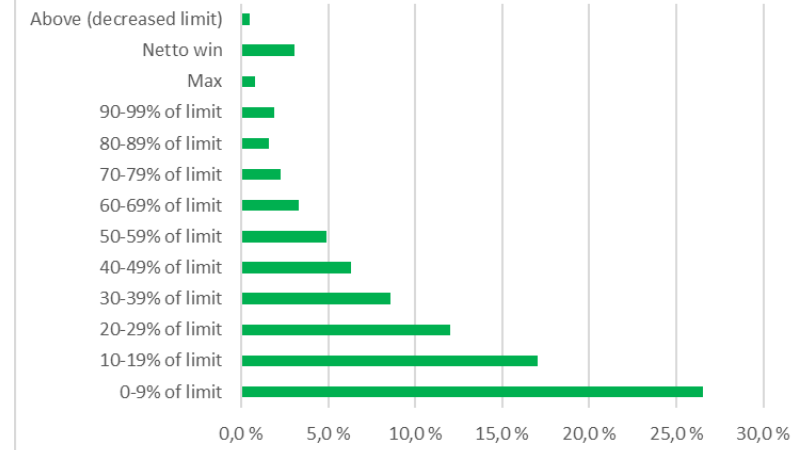
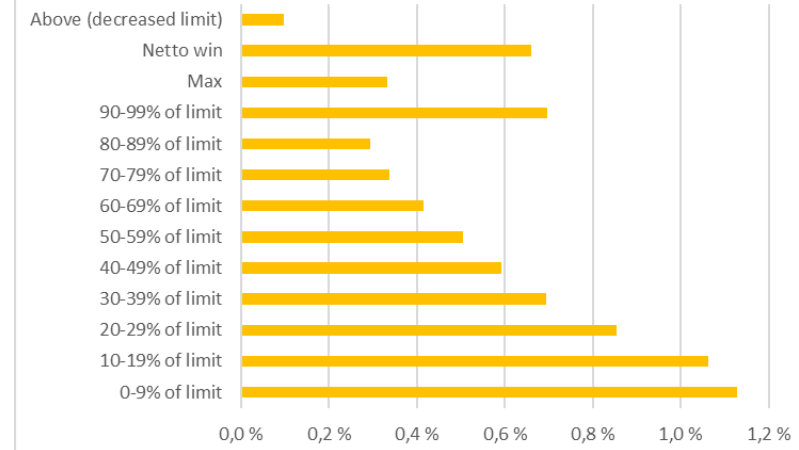
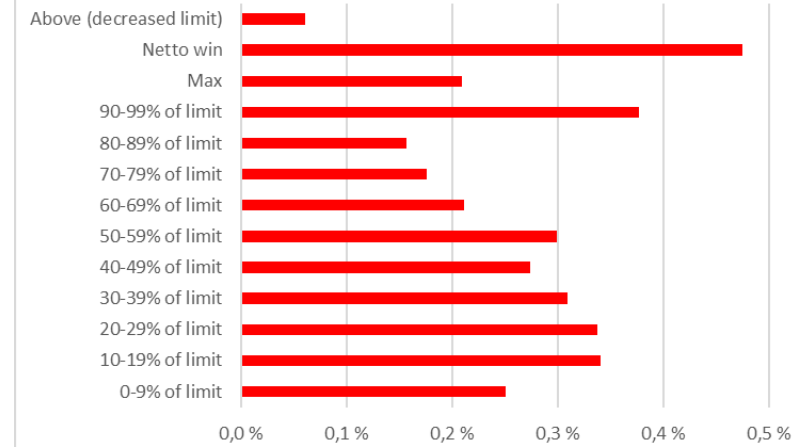
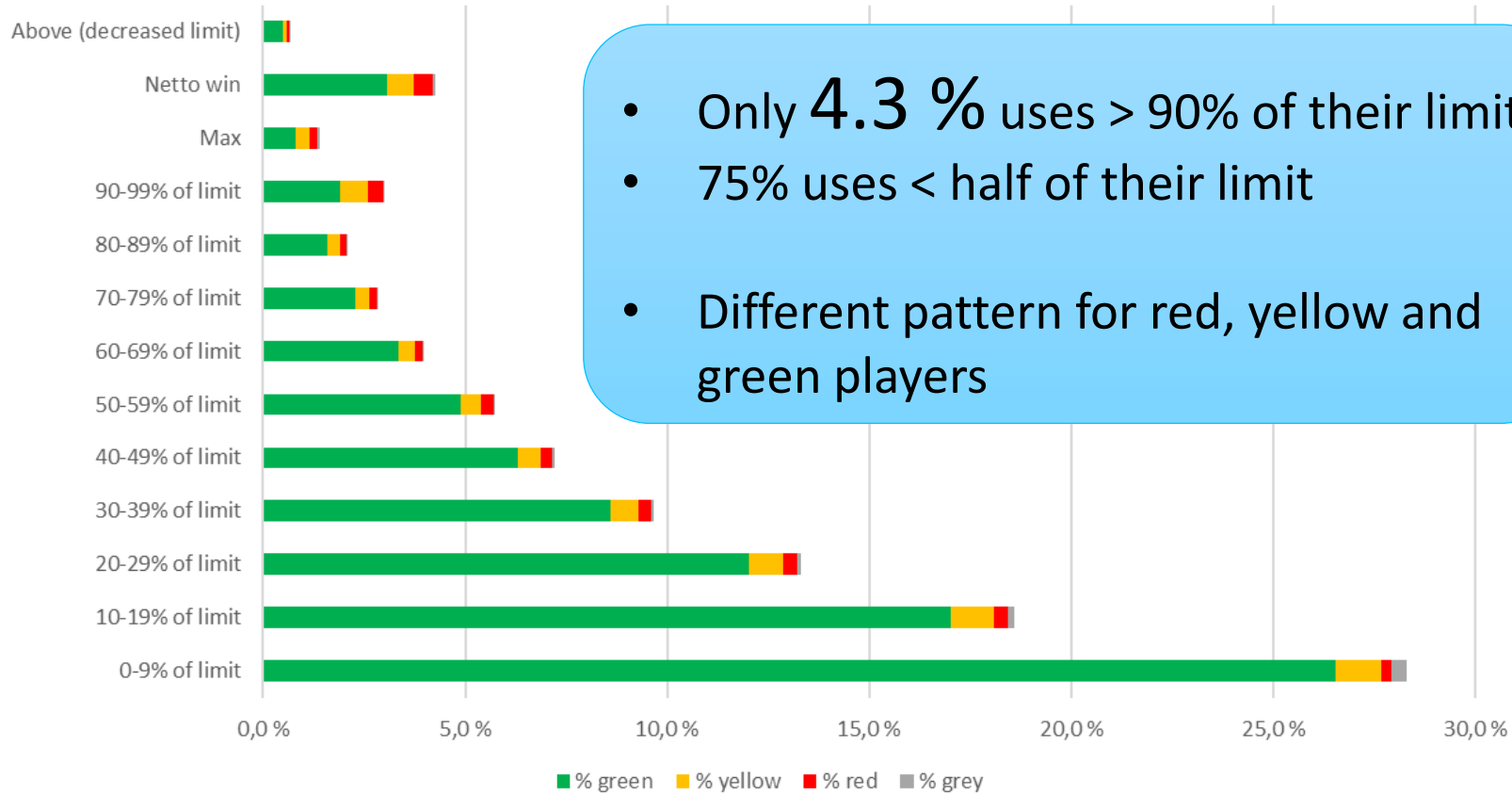


- < 9 % set limit to max
- Average = NOK 4 500 (€ 450)
- Different pattern for red, yellow and green players



Limit consumption

Consumption Global Loss Limit (month) (April 2019)



AGENDA

1 ABOUT &
WHY

2 FACTS &
NUMBERS

3 DOES IT
WORK?



1

Do mandatory loss limits prevent problem gambling?

Do the Players like them?

Are loss limits relevant for them?

Do they stop gambling when they reach their limits?

Other indicators:

- Help Line statistics
- Internal data



RESEARCH

Dr. Mark Griffiths (NTU)

Dr. Michael Auer (neccton)

Global Limit Analysis

(Commissioned research)

Auer, M., Reiestad, S.H. & Griffiths, M. D. (2018). Global limit setting as a responsible gambling tool: what do players think? *International Journal of Mental Health and Addictions*, 1-13 (<https://link.springer.com/article/10.1007/s11469-018-9892-x>)

Auer, M., Hopfgartner, N., & Griffiths, M. D. (2018). The effect of loss-limit reminders on gambling behavior: A *real-world study of Norwegian gamblers*. *Journal of Behavioral Addictions*, 7(4), 1056-1067.



Data

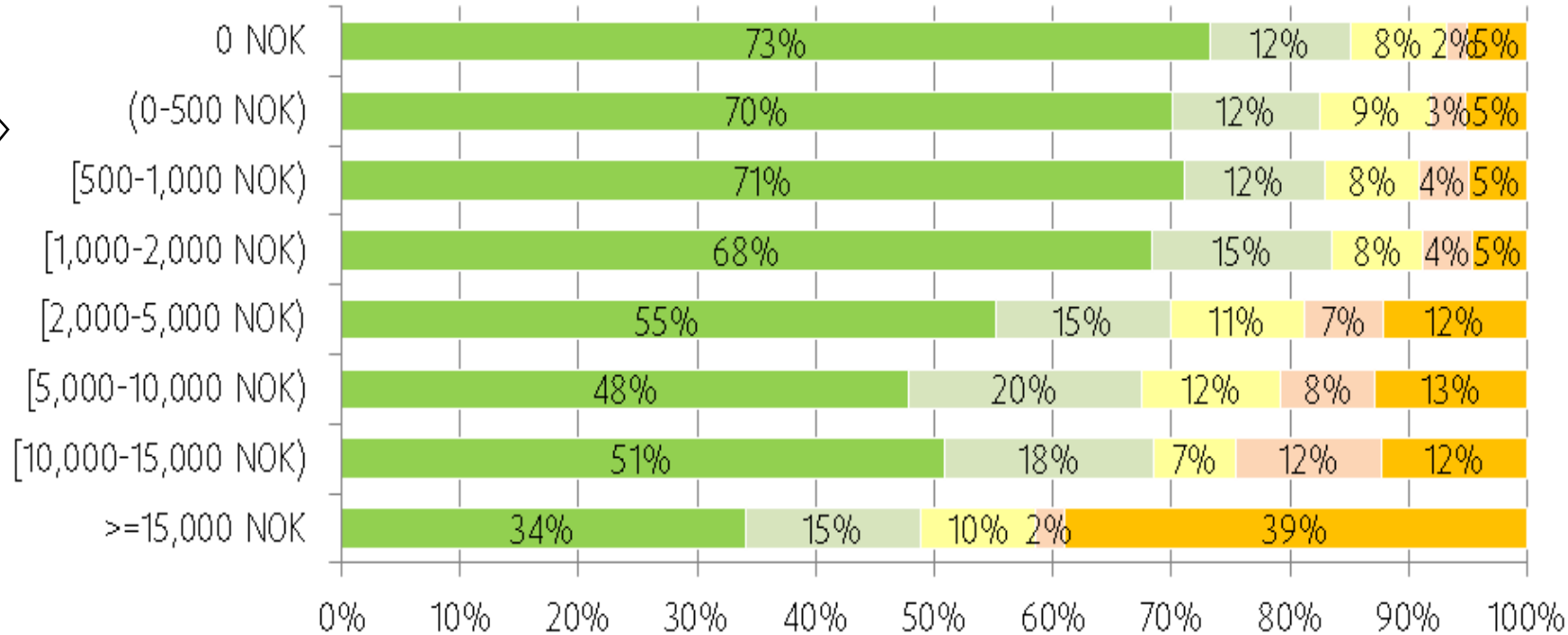
- Playerdata: **20% of all active players between Sep 2015 and Sep 2017**
- **Survey November 2016**
 - 2057 interviews
 - Low risk players (green): 1233
 - Moderate risk players (yellow): 201
 - High risk players (red): 490
 - Random selection of players, but weighted based upon Playscan status



I feel positive towards the global limit

■ agree entirely ■ agree in part ■ neither agree nor disagree ■ disagree in part ■ disagree entirely

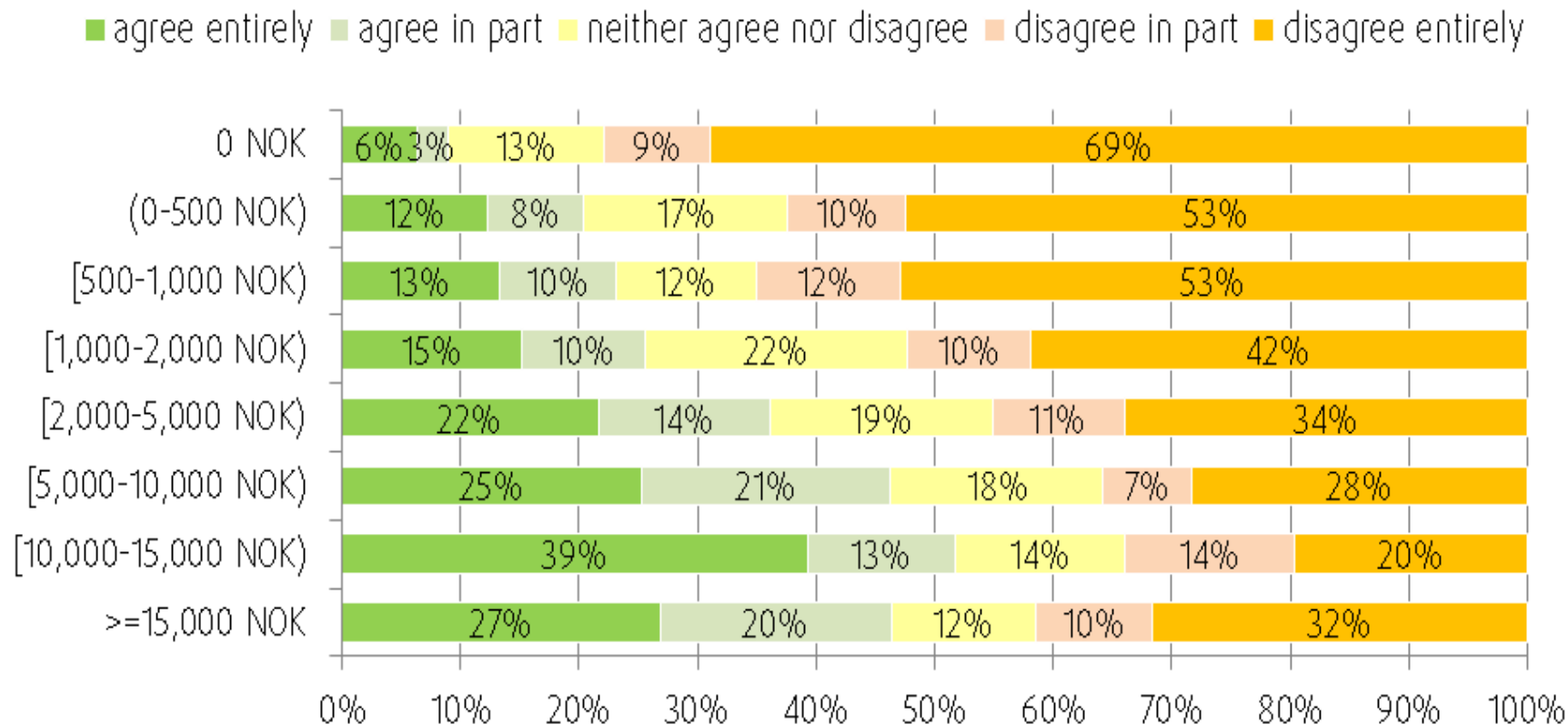
Players divided into groups by total loss pr month



- **80% of all players are positive, 9% neither/nor**
- Even 49% of most intense players feel positive towards the global limit
- Gambling intensity is negatively correlated with a positive attitude



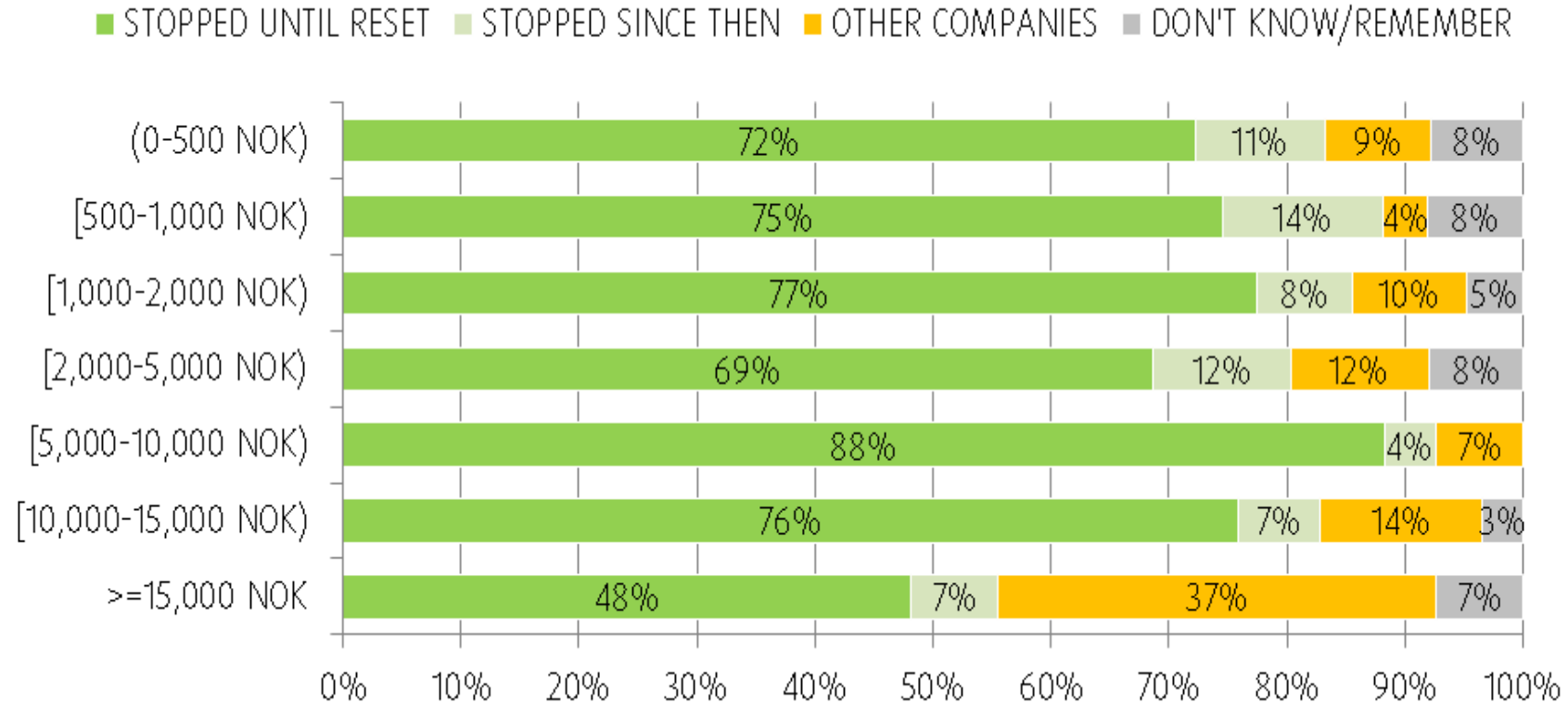
A global limit is relevant to me



- 23% of players who lose between NOK 500 and 1,000 feel the global limit is relevant
- 47% of players who lose more than NOK 15,000 feel the global limit is relevant
- **The more players gamble, the more relevant they perceive the limit**



Played with other companies when stopped



- 4% of players who lose less than NOK 1,000 played with other companies
- 37% of players who lose more than NOK 15,000 played with other companies
- **Only 10% of all players played with other companies**



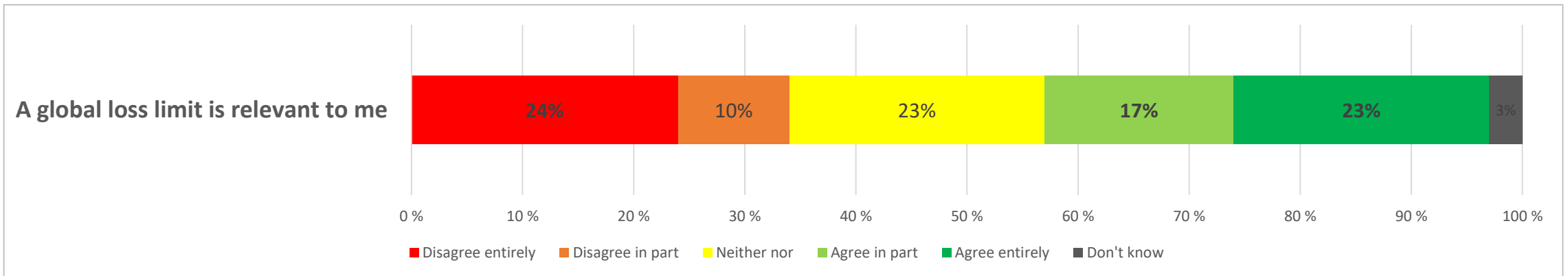
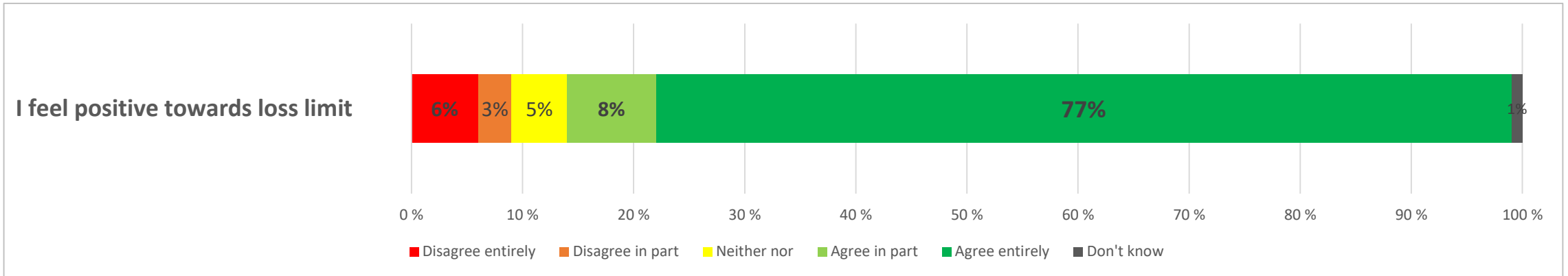
UPDATE!

Can we
confirm the
findings?

- New survey **May 15th -> onwards** (still in the field)
- Sent to 10 000 players **that reached** their gambling limits in 2018 or 2019
- **Preliminary results after one week!**
 - **571 respondents**
 - (Reminder will be sent)



How much do you agree or disagree to following statements?

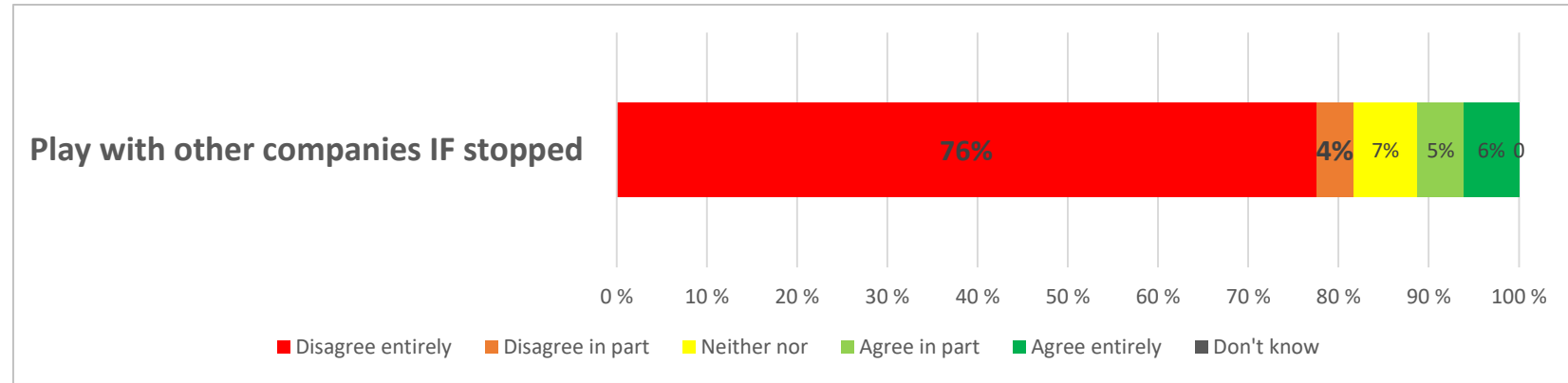


BASE: ALL n = 571



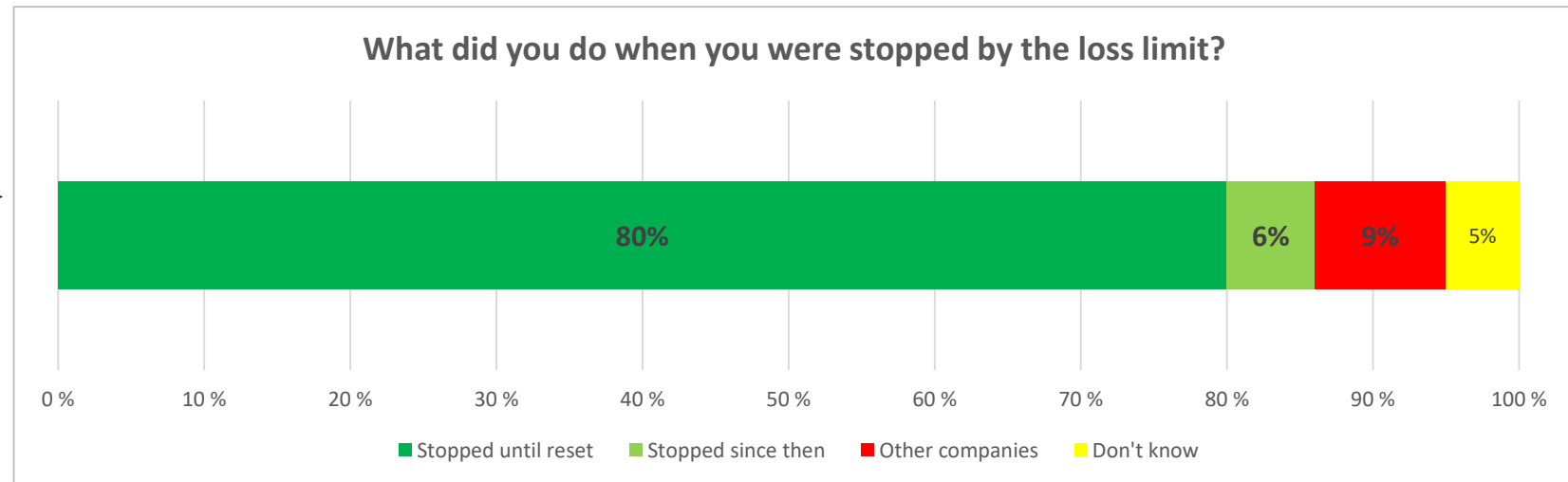
Will they play with other companies if stopped?

What they say they will do



BASE: ALL n = 571

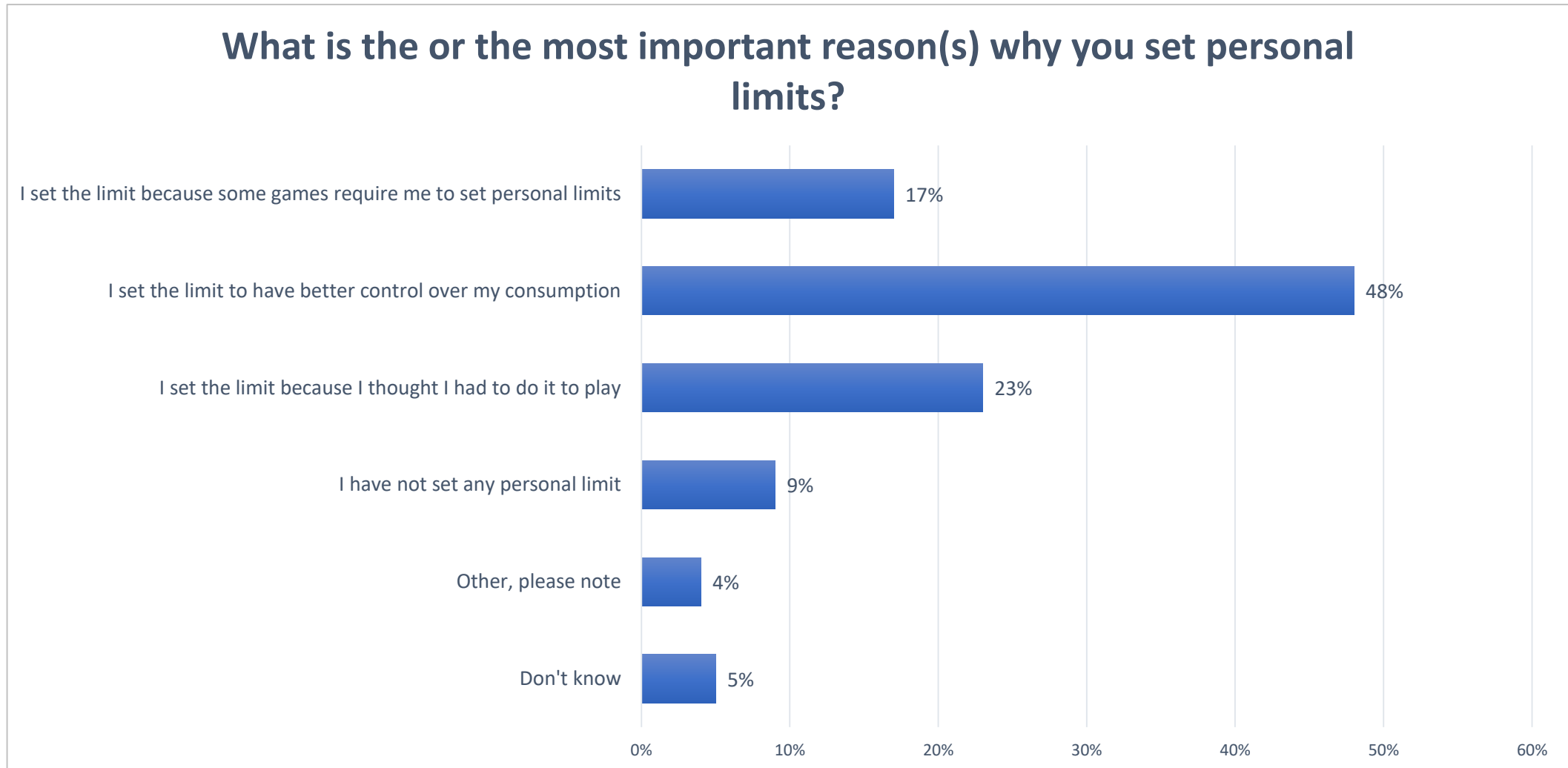
What they say they did



BASE: Limit hit n = 347



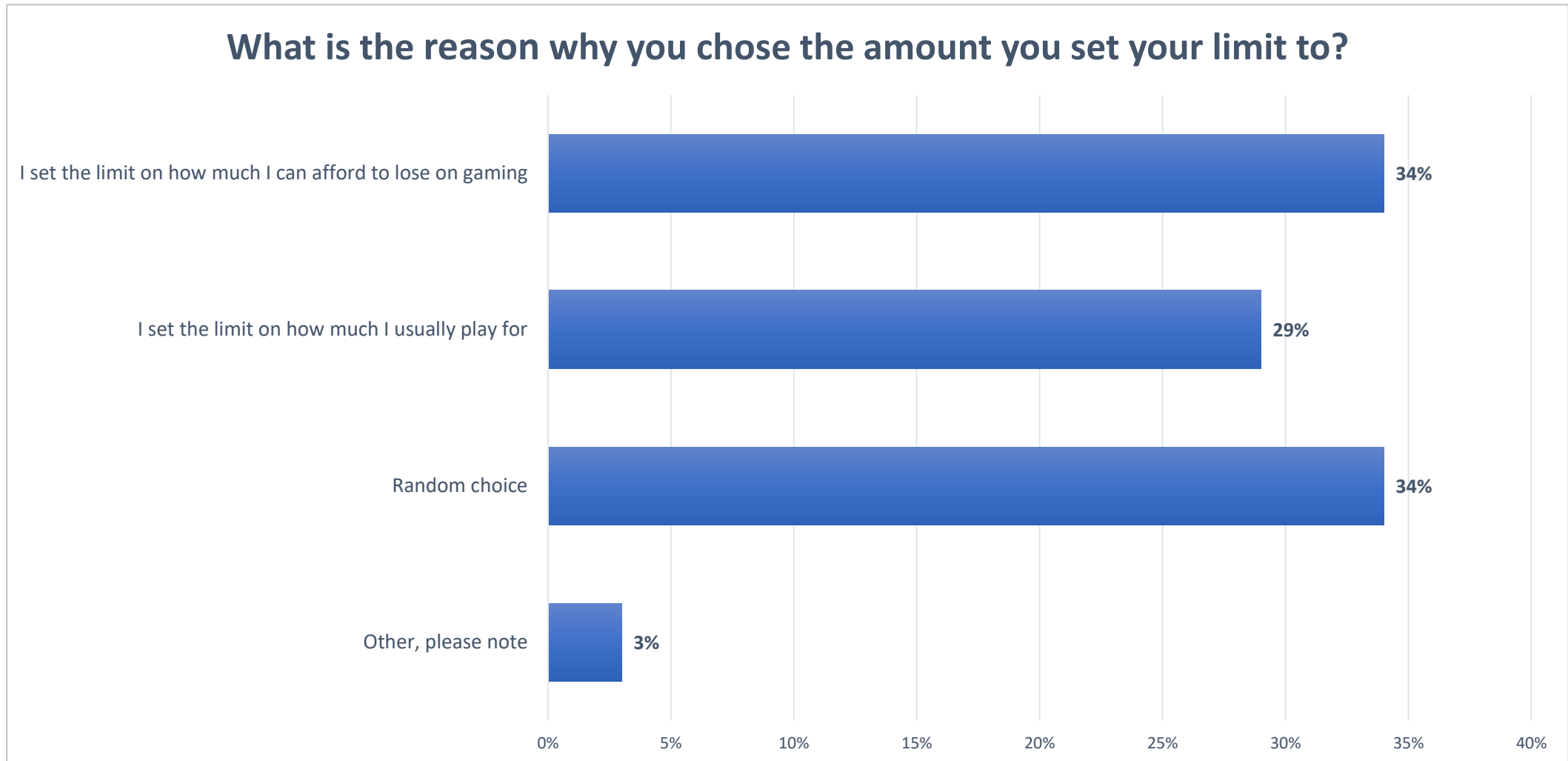
Motivation (1)



BASE: n = 545



Motivation (2)



BASE: n = 494



1

Do mandatory loss limits prevent problem gambling?

Do the Players like them?

Are loss limits relevant for them?

Do they stop gambling when they reach their limits?

Other indicators:

- Help Line statistics
- Internal data



1

Do mandatory loss limits prevent problem gambling?

Do the Players like them?



Are loss limits relevant for them?



Do they stop gambling when they reach their limits?



Other indicators:

- Help Line statistics
- Internal data



National Help Line

(some data from Help Line Statistics Report 2018)

Game (main problem)	Calls	%
Casino on Internet	286	54 % of all calls
Norsk Tipping		5 %
Norsk Tipping and offshore companies		15 %
Offshore betting companies		71 %



Reduction in the average loss from high risk and moderate risk players (effect from the 12 first weeks after introduction)

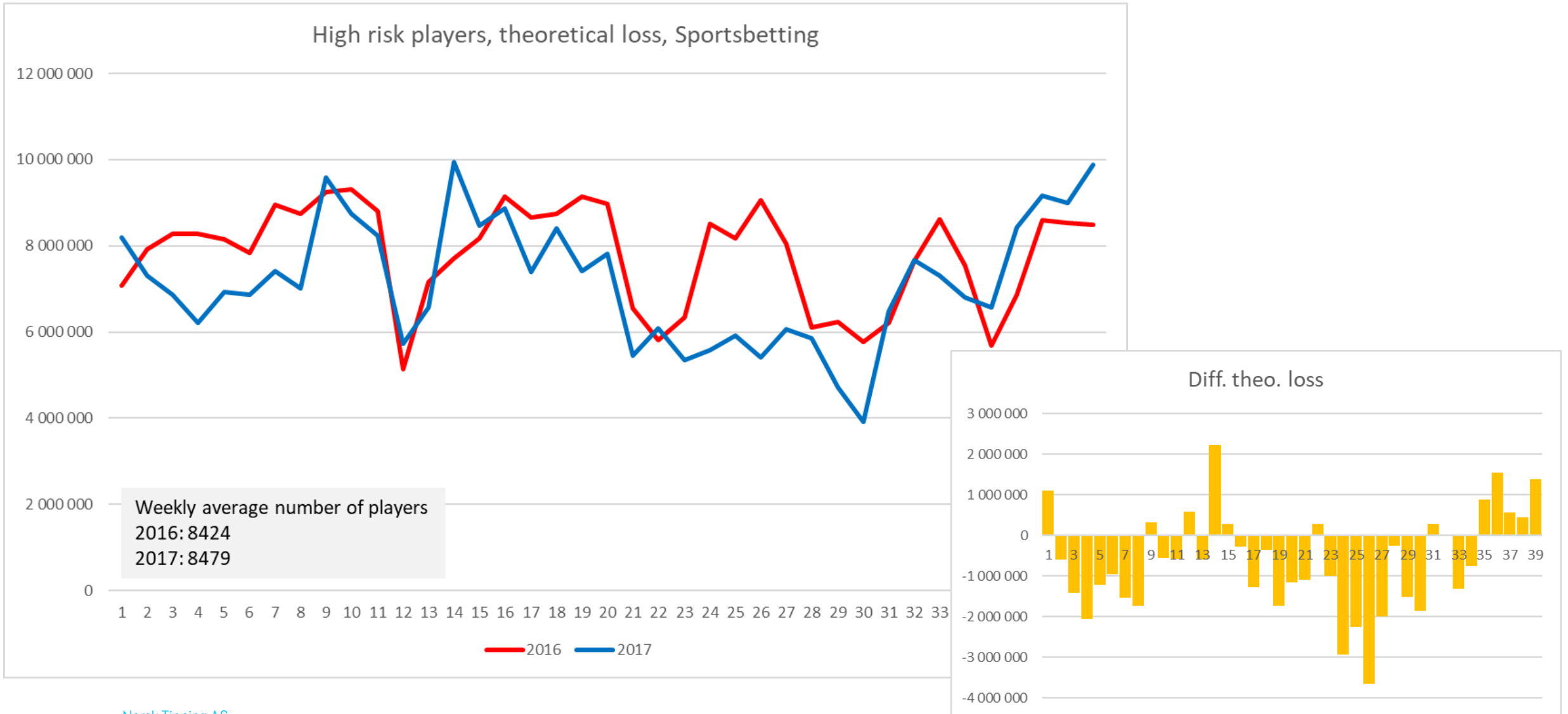
Distribution of GGR	Change in average weekly GGR
Sum high risk players	-11,40 %
Sum moderate risk players	-4,90 %
Sum low risk players	0,10 %
Total	-2,80 %

Reduced loss = reduced income (GGR) = ca. € 15 millions yearly

«Red money»



Biggest effect for high risk sports players





OTHER FINDINGS

(no time to go into details)

- Conscious limit-setting is positively correlated with loyalty among online-casino players
- The 80% loss-limit reminder reduces subsequent gambling



1

Do mandatory loss limits prevent problem gambling?

Do the Players like them?



Are loss limits relevant for them?



Do they stop gambling when they reach their limits?



Other indicators:

- Help Line statistics
- Internal data



1

Do mandatory loss limits prevent problem gambling?

Do the Players like them?



Are loss limits relevant for them?



Do they stop gambling when they reach their limits?



Other indicators:

- Help Line statistics
- Internal data





What is the effect on sales?

Number of customers?

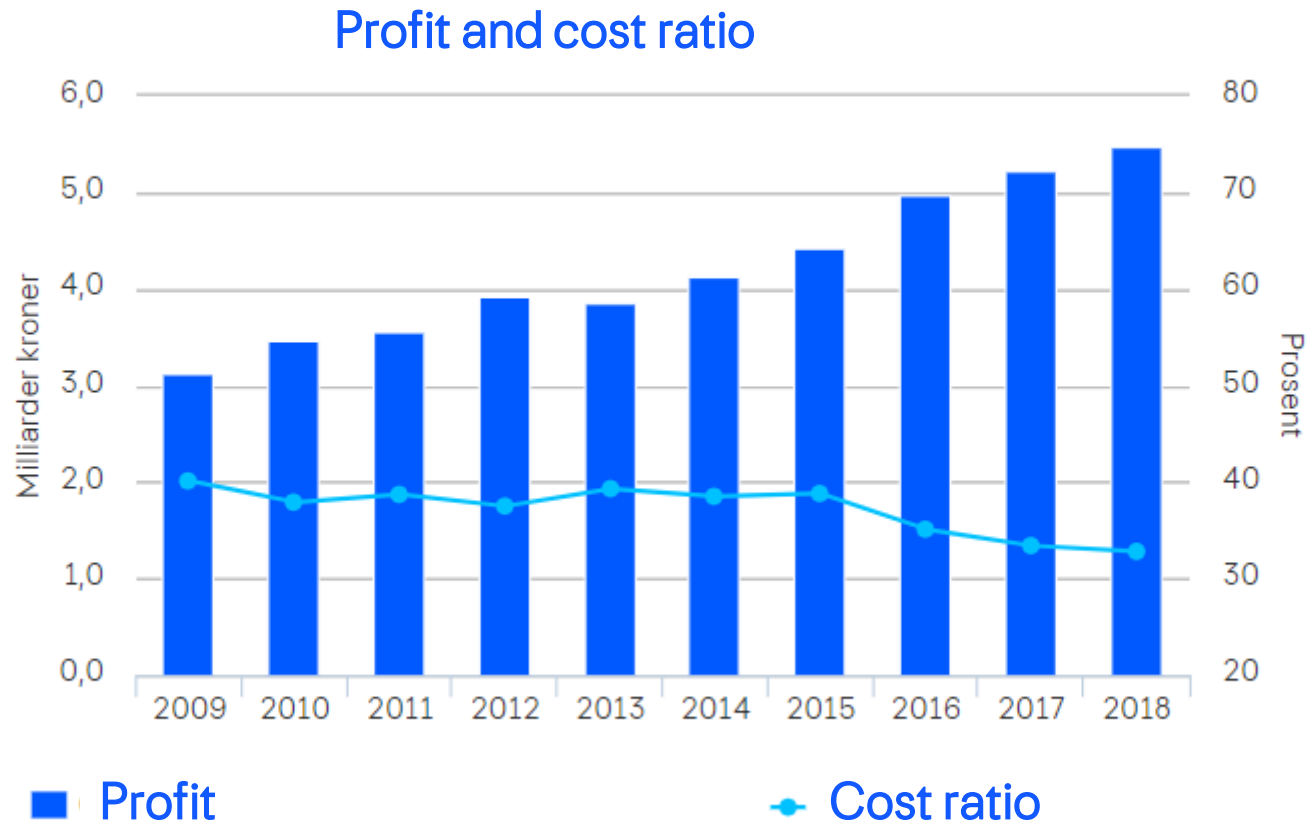
Image and trust

2

What is the effect for the company?

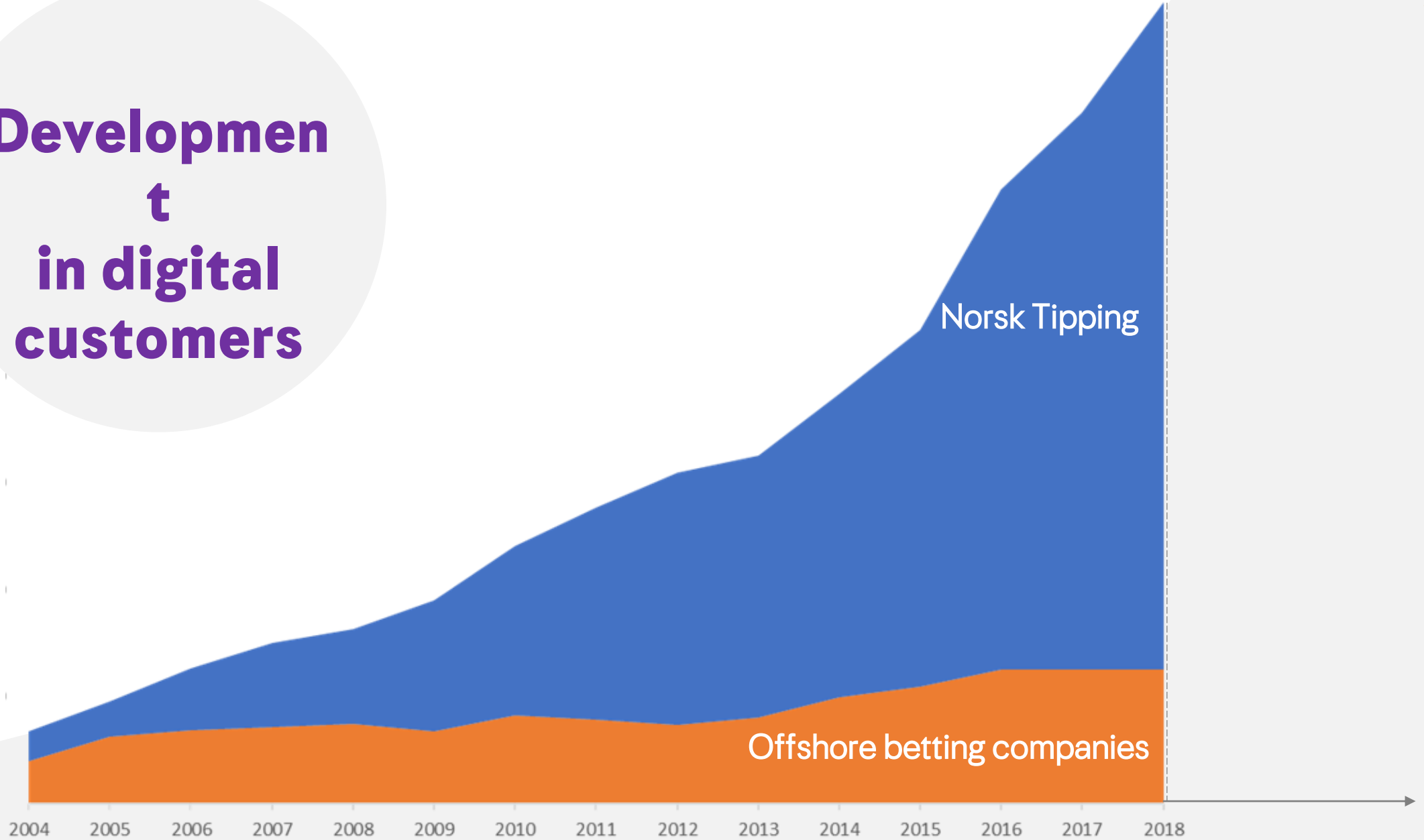


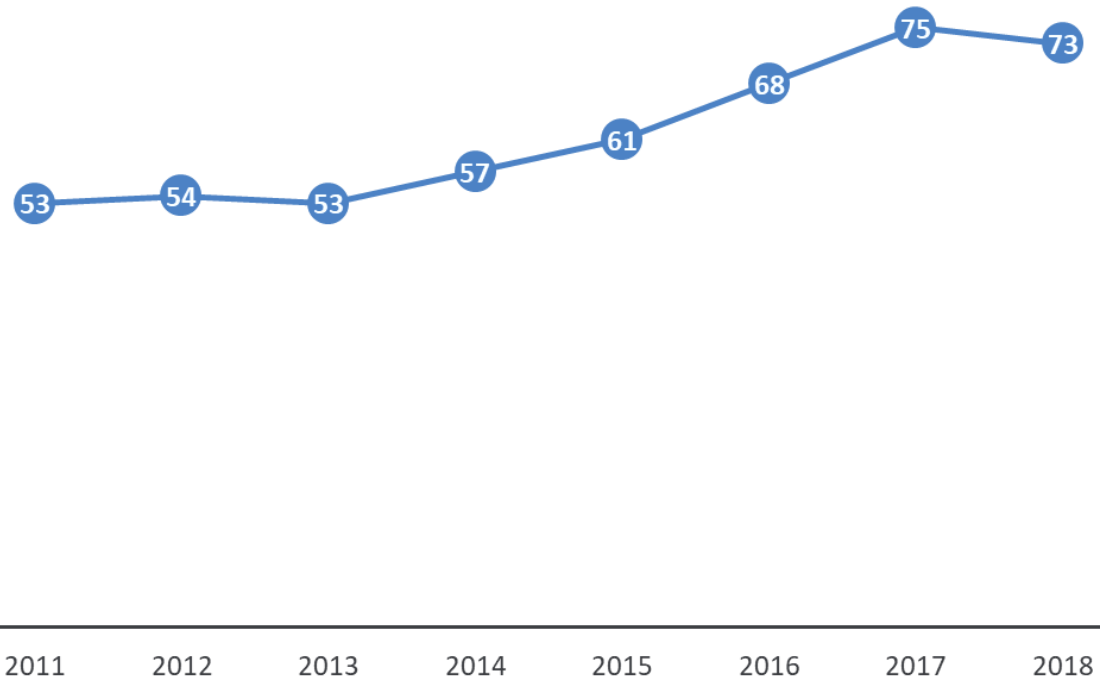
Development of profit and cost ratio





Development t in digital customers





Top 5

**Corporate image
in Norway -2018**



1

Do mandatory loss limits prevent problem gambling?

Yes

2

What is the effect for the company?

Positive



Summary

Safety

Mandatory loss limit prevents problem gambling and contributes to sustainable growth and increased trust from the players and the society

CONTACT INFORMATION

 **Bjørn Helge Hoffmann**

 **bjorn-helge.hoffmann@norsk-tipping.no**



Norsk Tipping